

APH Tooling

For Your Punch Press Machine

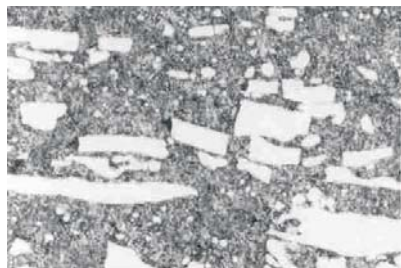


- Powder Metallurgy - High Speed Steel
- Punch Life Outperforms Our Previous Best By 10 Times
- Trouble Free Productivity

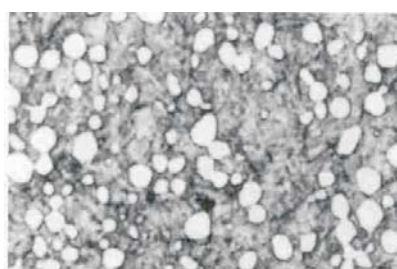


APH

Thick & Thin Turret Tooling



High Speed Steel
Grain Structure



APH Uniform Grain Structure



High Speed Steel
TiCN Coated Tool*



APH Tool*

*Photos show punch tip
After test hits

Increase Productivity By Reducing Machine Downtime

- APH is a high speed steel, manufactured using a unique powder-metallurgy process to produce a uniform grain structure
- APH's uniform structure encompasses all of the 4 key properties of punch tool steel

Hardness
Toughness
Impact strength
Wear resistance

- Increased punch life between punch grinds
- APH offers a low friction co-efficient
- Example

Material: 2.0mm Stainless Steel

Tool: 30 x 5 rectangle

Test: Punch edge wear

Result: HSS TiCN Tool 0.085mm wear

APH Tool 0.005mm wear

APH offers 17 times less wear

For further information contact the

Tooling Hotline

Tel: 0845 841 2410

Fax: 0845 841 2420

E-mail: tooling.info@amada.co.uk

AMADA
Amada United Kingdom Limited

SPENNELLS VALLEY ROAD, KIDDERMINSTER, WORCESTERSHIRE DY10 1XS. ENGLAND.

Tel 01562 749500, Fax 01562 749510, e-mail Info@Amada.co.uk, www.Amada.co.uk

Specifications subject to change without prior notification

©August 2002